

Waterproofing Membranes



CCW MiraDRI 860/861

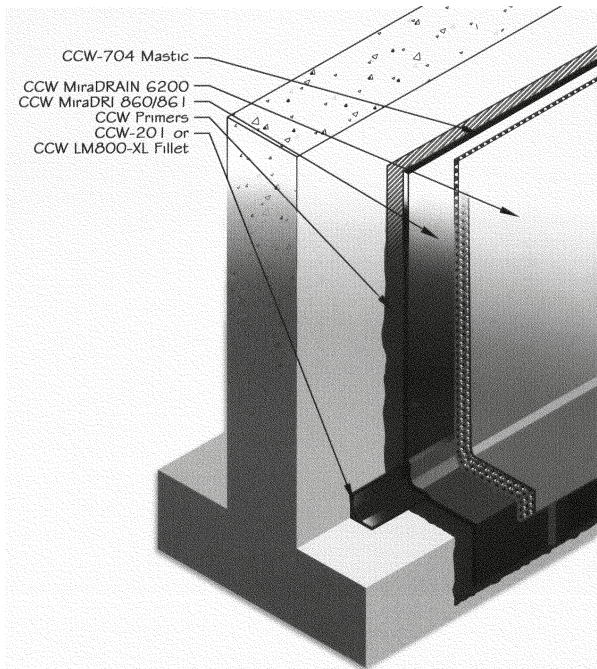
Sheet Membrane Waterproofing Systems

CCW MiraDRI 860/861 are self-adhering sheet membranes consisting of 56 mils (1.4 mm) of rubberized asphalt laminated to 4 mils (0.1 mm) of polyethylene to form a minimum 60 mil (1.5 mm) membrane. CCW MiraDRI 860 membrane is a summer grade material, suitable for installations where the ambient temperature is 40°F (4.4°C) or above. CCW MiraDRI 861 should be used for applications between 25°F (-3.9°C) and 65°F (18°C). The combination of these two excellent waterproofing materials provides a high-performance, extremely durable waterproofing barrier.

CCW MiraDRI 860/861 membranes are used for vertical and horizontal waterproofing on structural foundation walls and decks. Below-grade foundation walls, tunnels, split slabs, plaza decks and parking decks are all areas where CCW MiraDRI 860/861 may be applied. CCW MiraDRI 860/861 also may be used in interior areas such as mechanical rooms, laboratories, kitchens and bathrooms. CCW MiraDRI 860/861 should be covered with either CCW 200V/300HV Protection Course, CCW Protection Board or CCW MiraDRAIN® drainage composites.

CCW MiraDRI 860/861-36 = 36" W x 67' roll (200 sq. ft.).
25 rolls per pallet (5000 sq. ft.) - Weight = 80 lb/roll (approximate).

CCW MiraDRI® 860/861



**Self-Adhered Waterproofing
From the Moisture Protection Experts**

Advantages of CCW MiraDRI

- **Fully adhered membrane** – Eliminates water migration which can otherwise cause leakage through cracks.
- **Factory controlled thickness** – Eliminates thin spots which could be easily penetrated, allowing leakage.
- **Preformed sheet** – Eliminates pinholing.
- **Flexibility over cracks** – Elastomeric properties accommodate normal expansion and contraction of the substrate.
- **Resists Hydrostatic Pressure.**
- **Mechanically strong.**
- **Easy to apply.**
- **Cost-competitive** – The highest performance system with the best life cycle cost.
- **The CCW MiraDRI/MiraDRAIN Systems Guarantee** – A safe waterproofing choice from a reliable company backed by a combined CCW systems warranty.

Waterproofing Membranes



CCW MiraDRI Accessories

CCW-704 Mastic

Carlisle CCW-704 is a solvent base, rubberized bitumen mastic. After evaporation of the solvent, the remaining compound is a rubber-like material that adheres tenaciously to the polyethylene face of the sheet membrane.

Typical Uses

CCW-704 Mastic is used as a secondary seal on the seams, T-joints, overlaps and other terminations/penetrations of the CCW sheet membrane systems. It is designed for use on the top surface and edges of the CCW Sheet Membrane and should never be used underneath the membrane.

Coverage Rate

A 1/2" bead yields approximately 100 linear feet per gallon. Estimate one 30 oz. tube for "T" joint and end lap treatment for every 200 sq. ft. of membrane.

Packaging

30 oz cartridges/12 cartridges per case.
Five gallon pails/45 pails per pallet.

CCW 200V/300HV Protection Fabrics

CCW 200V and 300HV Protection Fabrics are extremely tough nonwoven polypropylene protection courses, specifically designed by Carlisle Coatings & Waterproofing to protect CCW waterproofing membranes.

Typical Uses

CCW 200V Protection Fabric is a specifically designed product to cushion and protect the CCW MiraDRI 860/861, CCW-525 and CCW Butyl waterproofing membranes in vertical applications.

CCW 300HV Protection Fabric is a thick nonwoven cushioning fabric that provides the ultimate solution for horizontal applications. CCW 300HV is engineered to be placed over CCW MiraDRI 860/861, CCW-525 and CCW Butyl Membrane waterproofing membranes in horizontal and vertical applications.

Packaging

200V:
40" x 200' (102cm x 61m), 54 lbs (24 kg);
12.5' x 200' (3.8m x 61m), 140 lbs (63 kg)

300HV:
40" x 200' (102cm x 61m), 58 lbs (26 kg);
12.5' x 200' (3.81m x 61m), 195 lbs (90 kg)

CCW-Primer For Use with Sheet Membranes

CCW-702 is a quick drying, solvent based, high-tack primer specifically designed to promote maximum adhesion of CCW Sheet Membrane Waterproofing products.

Apply by long nap roller or brush in an even film at 300 to 350 square feet per gallon. Allow Primer to dry for 20 minutes minimum at 75°F. Primer has a satisfactory cure when surface is tacky, but will not transfer when touched. Prime only areas to be waterproofed the same day. Reprime if area becomes dirty or wet. When used in adverse climatic conditions (i.e. humid, cool, etc.) or on a porous substrate, additional time will be required.

CCW LM-800XL Liquid Mastic

CCW LM-800XL Liquid Mastic is a fast-drying elastomeric, single component, cold-applied liquid.

Typical Uses

CCW LM-800XL is an accessory product used in conjunction with CCW MiraDRI 860/861 membranes. CCW LM-800XL is designed to be used as a fillet and reinforcement under CCW MiraDRI 860/861 membranes at footing foundation wall junctures or other inside corners; and between footing and foundations when tying in slab waterproofing with the foundation wall. Other applications include terminations and flashing to protrusions from horizontal and vertical surfaces; terminations at drains; and detailing of the substrate prior to CCW MiraDRI 860/961 membrane application.

Application

CCW LM-800XL should be applied directly from the gallon with a putty knife at 40 to 50 mil thickness unless otherwise specified. When used as a fillet under CCW MiraDRI 860/861, use a 3/4" (1.9cm) fillet and continue the CCW LM-800XL out 6" (15cm) in each direction. At membrane terminations, use 60 mils of CCW LM-800XL as a flashing and apply minimum of 2" (5cm) wide over the CCW membrane, and minimum of 1" (2.5cm) onto the surface being waterproofed. CCW MiraDRI 860/961 can be placed over CCW LM-800XL within one hour. Allow CCW LM-800XL to cure 24 hours before flood testing. Do not use CCW LM-800XL in applications subject to more than 57.8 ft (17.6) head of water. Coverage rate at 3/4" fillet is 20' per 29 oz tube. Coverage rate at 40 to 50 mil is 20 to 25 sq. ft. per gallon.

Waterproofing Membranes

CCW-525 Liquid Applied Waterproofing Membrane

CCW-525 is a one part, cold applied liquid material. Its modified polyurethane properties cure to form a strong, flexible membrane for various below grade applications.

CCW-525 is ideally suited for waterproofing on below grade foundation walls, tunnels, planters and other areas where seamless, elastomeric waterproofing is required.

CCW-525 is available in three viscosities (H, R & V) for application to horizontal and vertical surfaces.

Apply at 25 sq. ft./gal to achieve a 60 mil coating.



Features and Benefits

- Liquid-applied membrane
- Single component
- Moisture cured
- Coal-Tar free
- Cures to an elastomeric, monolithic membrane
- Vertical or horizontal application
- Provides tenacious adhesion
- Perfect for planters
- Can be used on smaller areas and detail work



Barricoat-S Spray-Applied Waterproofing Membrane

Barricoat is a water-based, asphalt emulsion modified with a blend of synthetic rubbers and special additives. It cures rapidly to a monolithic, highly flexible membrane.

For difficult to waterproof below grade substrates, Barricoat-S is the solution. Barricoat-S consists of a water-based modified asphalt emulsion, which is catalyzed to form a seamless, monolithic waterproofing membrane. Perfect for large jobs, Barricoat-S utilizes a convenient spray delivery system that provides a fast application with high mobility which improves overall job site efficiency. Barricoat-S can also be applied to green concrete and damp surfaces, which reduces job site down time.



Features and Benefits

- Performs as a vapor and water barrier
- May be applied to greenconcrete, damp surfaces and EPS forms
- Non-flammable, solvent free
- Excellent elongation and recovery
- Good tensile strength
- Exceptional bonding
- Creates a seamless membrane



CCW-500R Reinforced Hot-Liquid Applied Waterproofing Membrane

CCW-500 is a single component, hot-applied, rubberized asphalt compound that cures to form a strong, flexible, fully adhered, monolithic waterproofing and roofing membrane. The double-layer, reinforced CCW-500R system adheres tenaciously to virtually any structural surface, vertical or horizontal, to assure that water will not migrate beneath the membrane in the event of physical damage. CCW-500R allows for applications on a wide variety of substrate conditions and enhances crack bridging capability.



Waterproofing Membranes

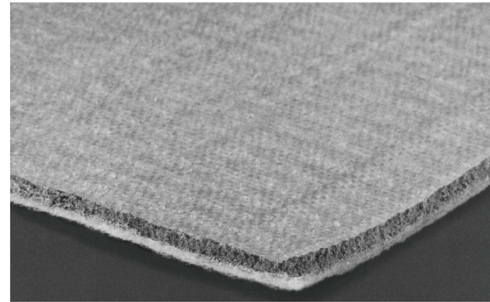
CCW MiraCLAY Bentonite Clay Below-Grade Waterproofing System

CCW MiraCLAY is specially constructed, flexible, below-grade foundation waterproofing system which utilizes sodium bentonite clay. The CCW MiraCLAY geotextile panel consists of sodium bentonite clay sandwiched between two layers of woven and non-woven, puncture resistant polypropylene fabric. CCW MiraCLAY is needlepunched together using the Infrabond™ process.



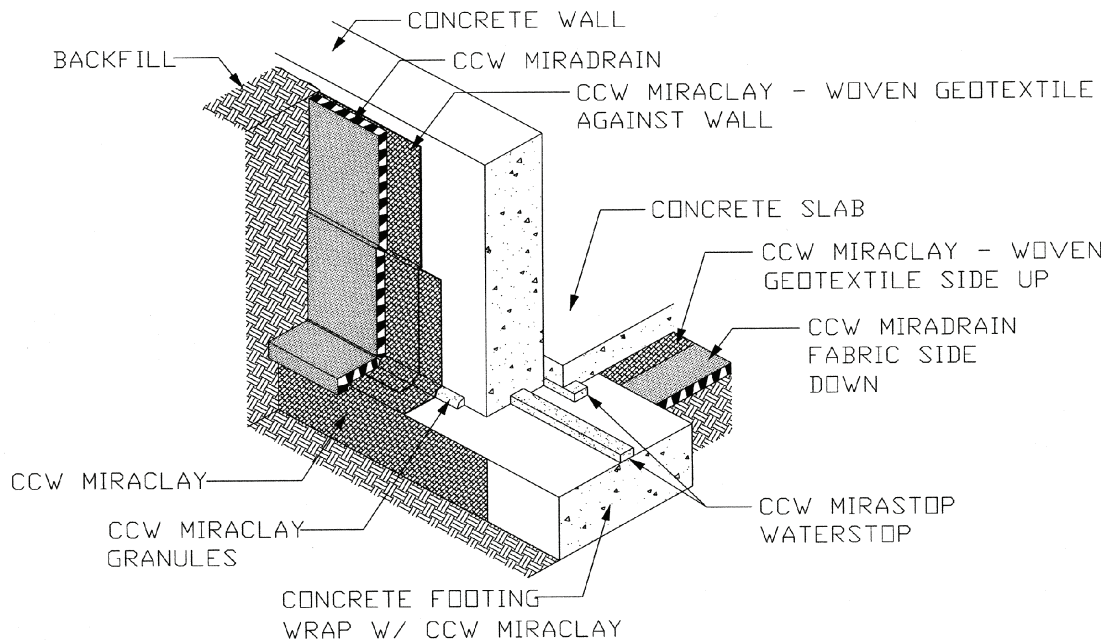
Features & Benefits

- High shear construction
- Impermeable waterproofing barrier when hydrated
- Self-sealing when punctured or penetrated
- Can be applied to wet surfaces
- Totally flexible
- Resistant to most chemicals
- Non-toxic, non-polluting, no fumes
- Economical and easy to install
- Cold weather application



Physical Properties

Bentonite Content: 1.0 lb./sq. ft. @ 12% moisture
 Dry Thickness: .25 inches
 Sheet Size: 4.5' x 15.5' (70 sq. ft.)
 Weight: 79 lb.



CCW MiraCLAY Mastic

A trowel-grade mastic of sodium bentonite. Use as a detail mastic at termination bars, soldier piles and pipe penetrations. A gallon of mastic will do 10 to 15 linear feet of 3/4" trowel bead.

CCW MiraCLAY Granules

Bentonite clay granules poured at the base of foundation wall and footing. A 50 lb bag will cover approximately 30 linear feet at a 1-1/2" fillet.